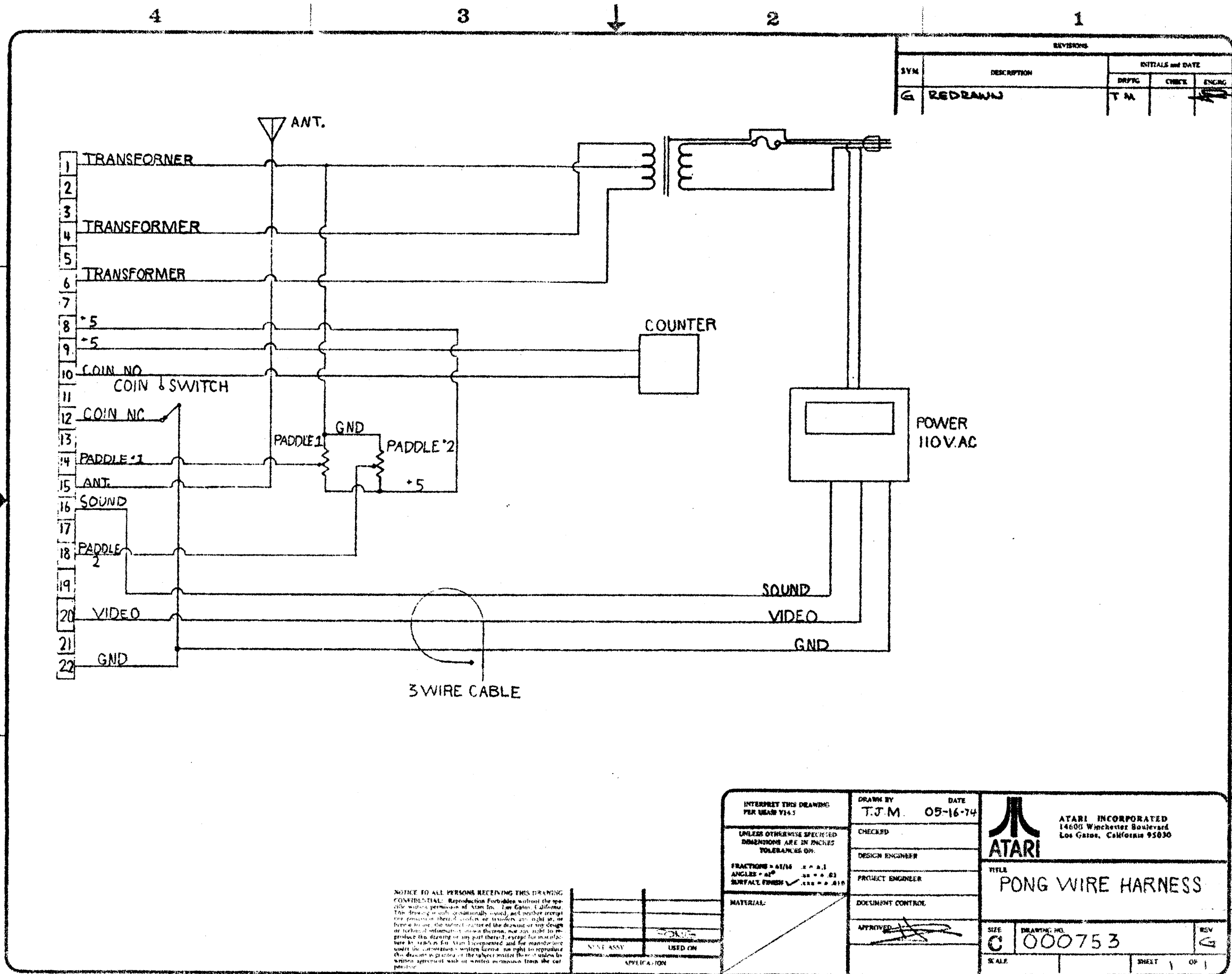


A001433  
RUE

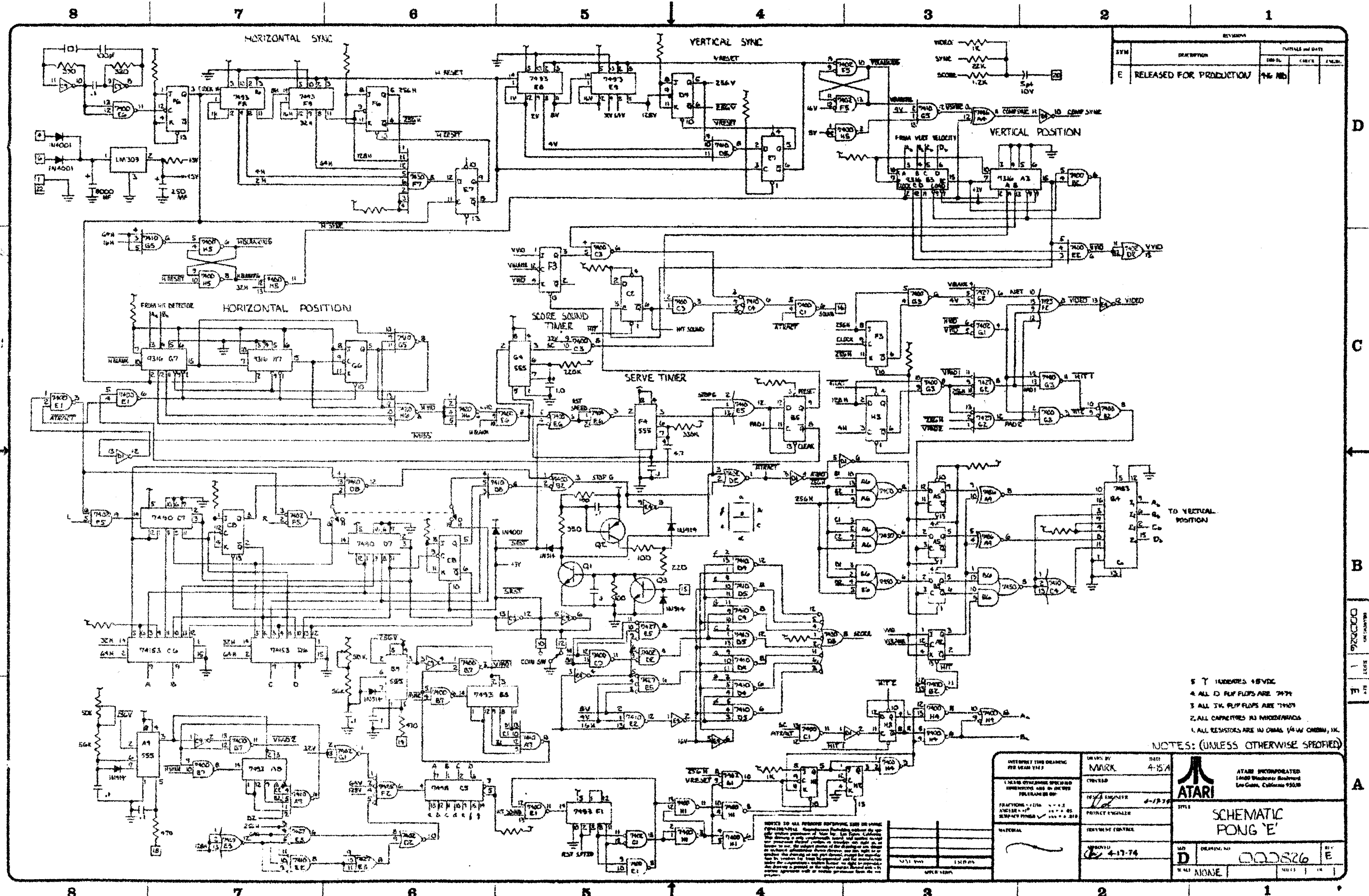


REVISIONS				
SYM	DESCRIPTION	INITIALS and DATE		
		DRFTG	CHECK	ENGRG
G	REDRAWN	T.M.		

DRAWING NO. 000753  
 SHEET 1 OF 1

NOTICE TO ALL PERSONS RECEIVING THIS DRAWING  
 CONFIDENTIAL: Reproduction Forbidden without the specific written permission of Atari Inc. Atari Games Corporation. This drawing is only for internal use and is not to be distributed outside of Atari Inc. without the specific written permission of Atari Inc. Atari Games Corporation. This drawing is not to be used for any other purpose without the specific written permission of Atari Inc. Atari Games Corporation.

INTERPRET THIS DRAWING PER USAS 714.3 UNLESS OTHERWISE SPECIFIED DIMENSIONS ARE IN INCHES TOLERANCES ON: FRACTIONS ± 0.1/16 ANGLES ± 0.1° SURFACE FINISH ✓ ± 0.001	DRAWN BY <b>T.J.M.</b>	DATE <b>05-16-74</b>	ATARI INCORPORATED 14600 Winchester Boulevard Los Gatos, California 95030
MATERIAL:	CHECKED	DESIGN ENGINEER	
NEXT ASSY	PROJECT ENGINEER	DOCUMENT CONTROL	
USED ON	APPROVED:	TITLE <b>PONG WIRE HARNESS</b>	
APPLICATION	SIZE <b>C</b>	DRAWING NO. <b>000753</b>	REV <b>G</b>
	SCALE	SHEET 1 OF 1	



REVISION		
SYM	DESCRIPTION	DATE
E	RELEASED FOR PRODUCTION	4-17-74

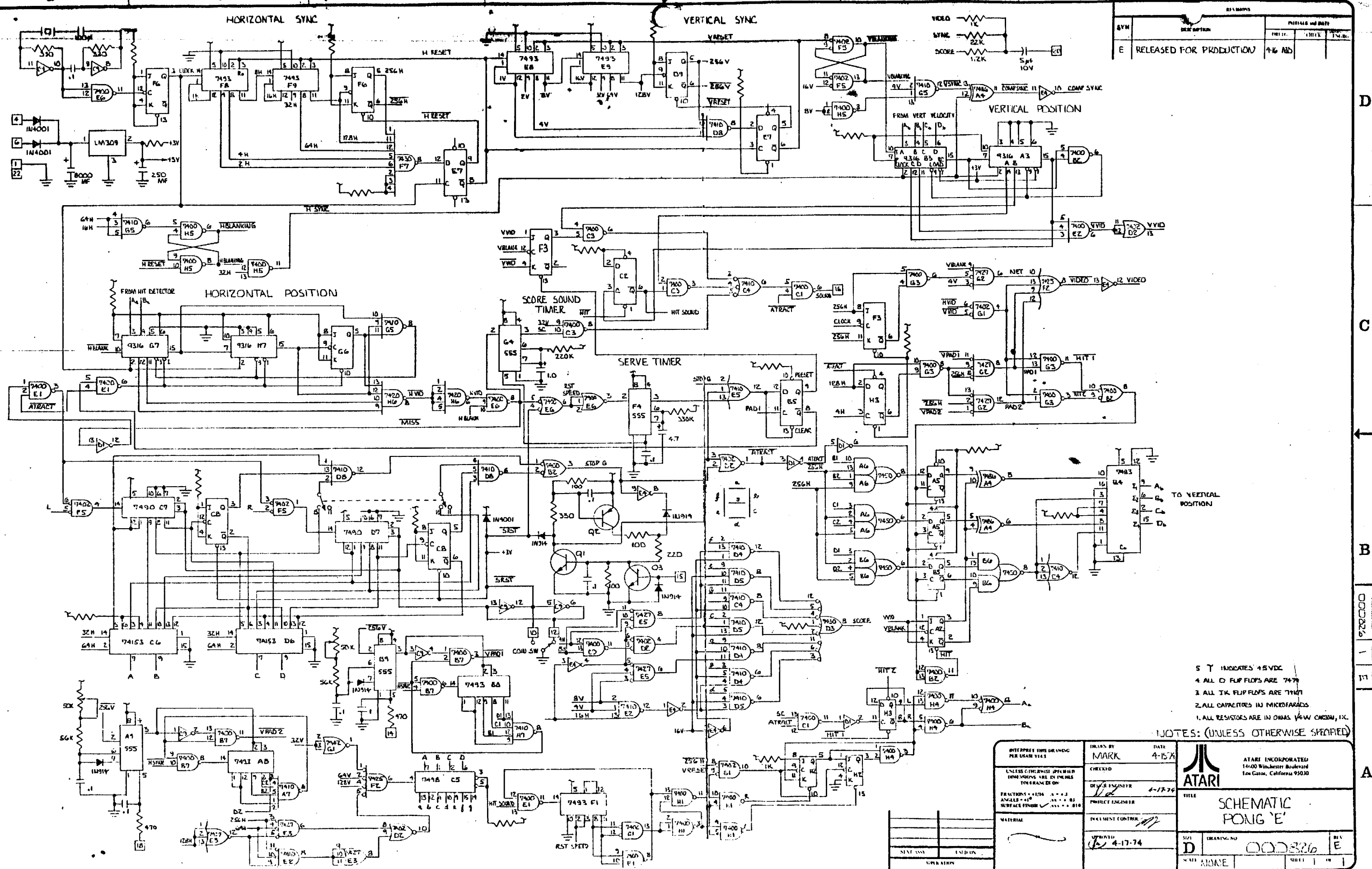
- 5 T INDICATES 10VDC
- 4 ALL D FLIP FLOPS ARE 7474
- 3 ALL JK FLIP FLOPS ARE 7410
- 2 ALL CAPACITORS IN MICROFARADS
- 1 ALL RESISTORS ARE IN OHMS (1/4W OHMM, 1K)

NOTES: (UNLESS OTHERWISE SPECIFIED)

INTERPRET THIS DRAWING FOR BOARD FAB 1. ALL DIMENSIONS UNLESS OTHERWISE SPECIFIED ARE IN INCHES 2. FRACTIONS - 1/16" MIN. + .001 3. DECIMALS - .001" MIN. + .0005 4. DIMENSIONS TO CENTER UNLESS OTHERWISE SPECIFIED	DRAWN BY <b>MARK</b>	DATE <b>4-15-74</b>	ATARI INCORPORATED 1400 Woodside Boulevard Los Gatos, California 95030
	CHECKED BY <b>[Signature]</b>	DESIGN ENGINEER <b>[Signature]</b>	
MATERIAL			TITLE <b>SCHEMATIC PONG 'E'</b>
APPROVED BY <b>[Signature]</b>			MR. D DRAWING NO. <b>000826</b>
DATE <b>4-17-74</b>			BY <b>E</b>

NOTES TO ALL PERSONS REFERENCING THIS DRAWING: This drawing is the property of Atari Inc. and is to be used only for the purpose of manufacturing the board shown. It is not to be used for any other purpose without the written consent of Atari Inc. All dimensions are in inches unless otherwise specified. All components are to be of the highest quality available. All components are to be of the type specified in the parts list. All components are to be of the type specified in the parts list. All components are to be of the type specified in the parts list.





REVISED  
 INITIALS AND DATE  
 E RELEASED FOR PRODUCTION 4-16-74

- 5 T INDICATES +5VDC
- 4 ALL D FLIP FLOPS ARE 7497
- 3 ALL JK FLIP FLOPS ARE 74101
- 2 ALL CAPACITORS IN MICROFARADS
- 1 ALL RESISTORS ARE IN OHMS UNLESS OTHERWISE SPECIFIED

INTERPRET THIS DRAWING PER USAB Y145 UNLESS OTHERWISE SPECIFIED DIMENSIONS ARE IN INCHES TOLERANCES UNLESS OTHERWISE SPECIFIED SURFACE FINISH UNLESS OTHERWISE SPECIFIED	DESIGNED BY <b>MARK</b>	DATE <b>4-15-74</b>	ATARI INCORPORATED 14100 Winchester Boulevard Los Gatos, California 95030
	CHECKED BY <i>[Signature]</i>	PROJECT ENGINEER <b>4-17-74</b>	
MATERIAL <i>[Blank]</i>	INCREMENT CONTROL <i>[Blank]</i>	REVISED BY <b>4-17-74</b>	DRAWING NO. <b>000326</b>
NEXT ISSUED <i>[Blank]</i>	SUPERVISION <i>[Blank]</i>	APPROVED BY <i>[Blank]</i>	SHEET <b>E</b>